

HYVA CRANE SPECIFICATION

- 1. Model** HST3.2E3
- 2. Technical data:**
- Maximum lifting capacity 3,200 kg at 2.5 meter
400 kg at 10.25 meter
 - Extension Three
 - Crane weight 1440 kg (excluding mounting parts)
 - Max working pressure 220 bar
 - Rated oil flow 25 L/min
 - Slewing angle 360° endless
 - Oil tank volume 32L
 - Mounting space 850mm
- 3. Configuration:**
- Boom Hexagon Section
Retracted length: 3.85m
Extended length: 10.45m
Elevated by double cylinders and wireline telescopic device
 - Winch Hydraulic motor driven
Planet gear speed reduction
Mechanical brake
Single line speed: 21m/min
Winch pull capacity: 12.5KN
Wire rope Diameter: 8mm
Wire rope Length: 62m
Wire rope breaking strength: 41.1KN
Hook Block: 2 sheaves
 - Stabilizer Hydraulic extend and jacks
Retracted width: 2255mm
Extended width: 3552mm
 - Hydraulic system Gear pump
Multiple control valve for boom, winch and slewing
Multiple control valve for stabilizer

➤ Safety device

Load indicator

Over-winding alarm and automatic stop

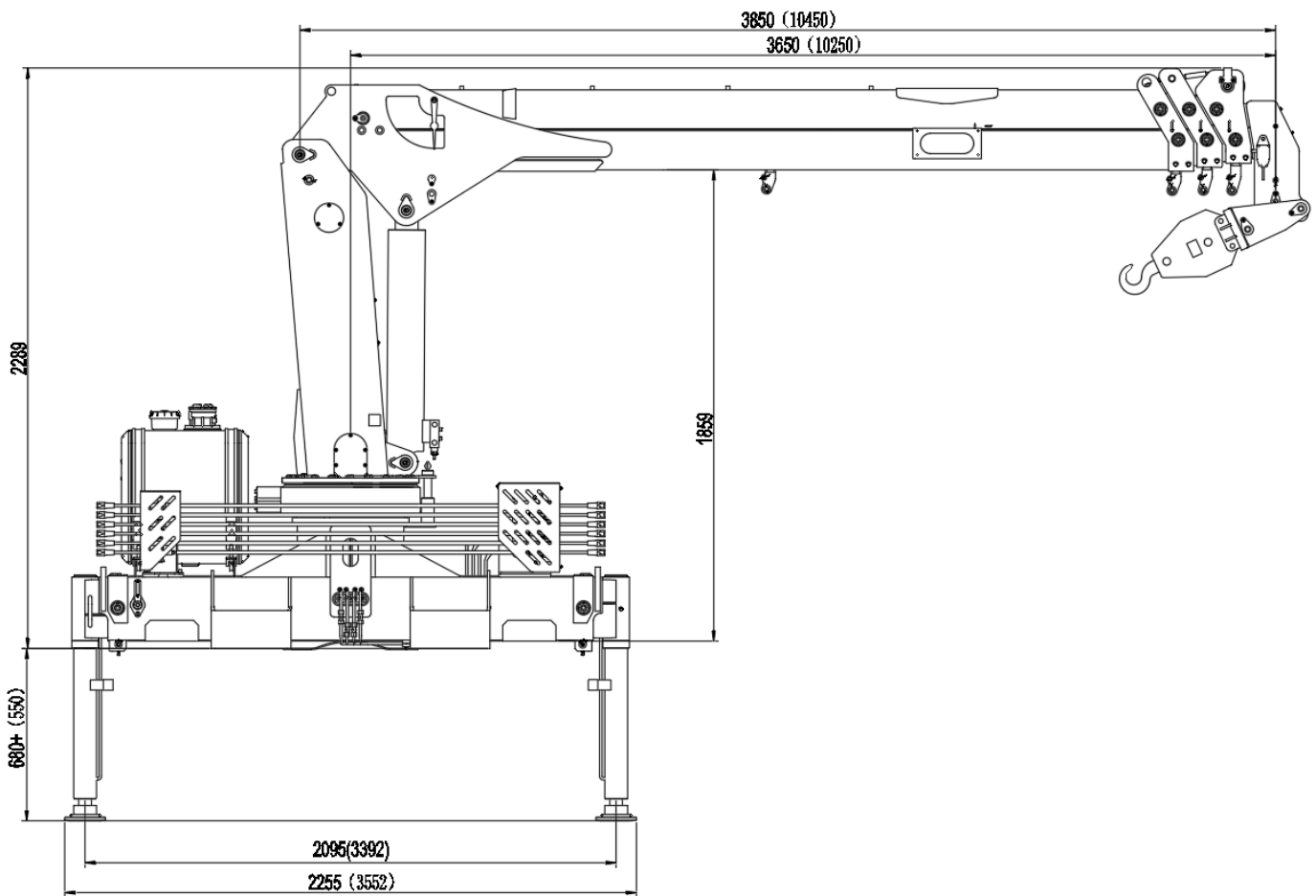
Hook safety latch

Hydraulic safety valves, check valves
and holding valve

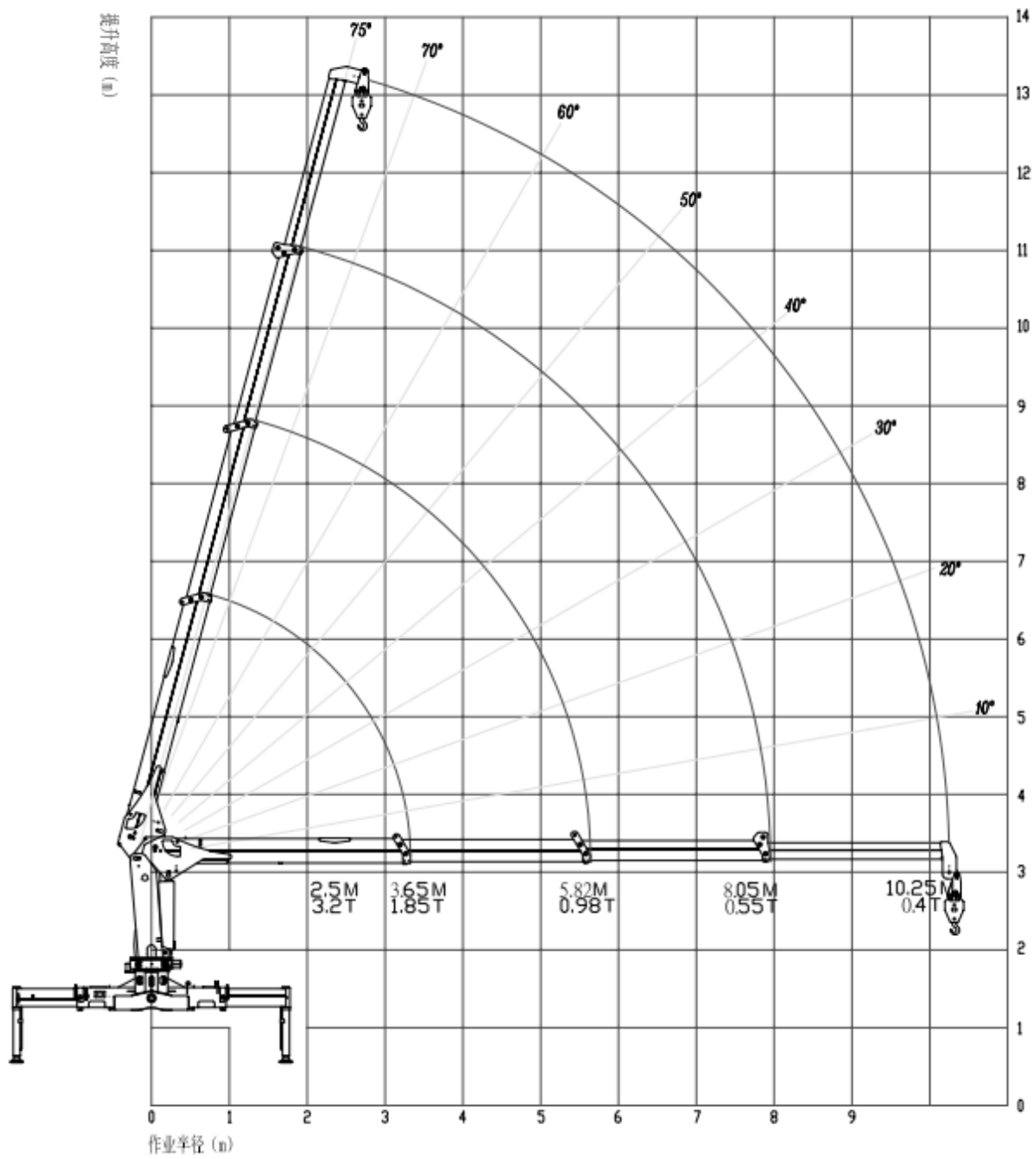
Level gauge

Hydraulic pressure gauge

4. Main demission



5. Load diagram



工作幅度(m) Working Radius	不同臂长最大起升载荷Max lifting load(T)			
	3.65m	5.82m	8.05 m	10.25 m
2.0	4.0			
2.5	3.2	2.1	1.65	1.35
3.0	2.2	1.95	1.55	1.25
3.5	1.85	1.7	1.45	1.17
4.0		1.45	1.4	1.07
4.5		1.3	1.25	0.97
5.0		1.1	1.05	0.88
5.5		0.98	0.9	0.8
6.0			0.8	0.73
6.5			0.7	0.65
7.0			0.65	0.59
7.5			0.6	0.54
8.0			0.55	0.49
8.5				0.46
9.0				0.44
9.5				0.42
10.0				0.41
10.5 (10.25)				0.4